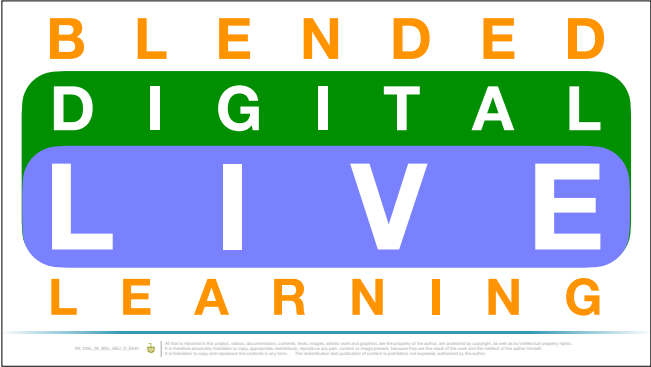




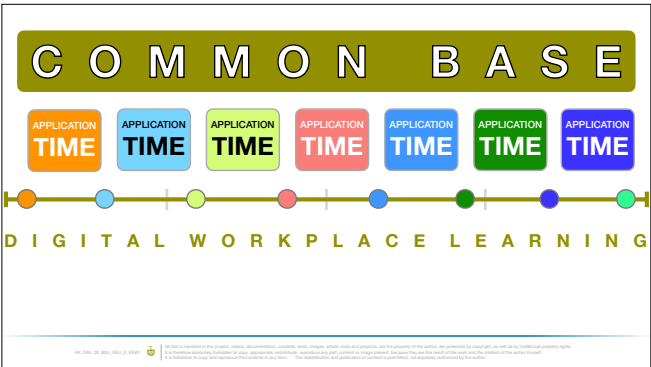
Blended digital and live training



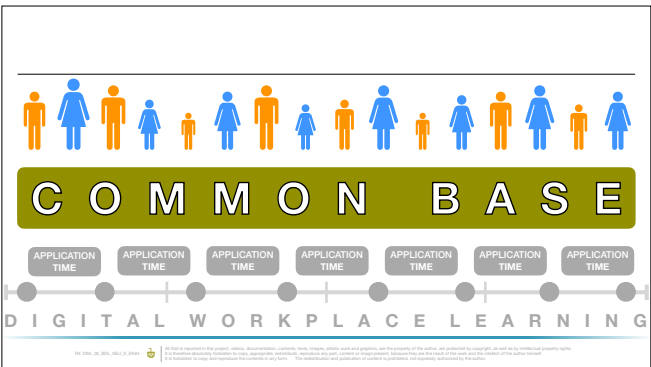
Predisposition for blended learning: digital and live.



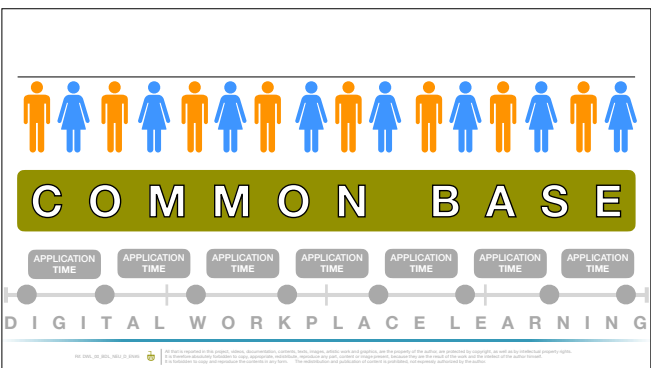
DWL courses include the integration of digital and live interventions, in presence or remote, by training professionals.



They facilitate the integration of training with activities, creating spaces for application during the course.

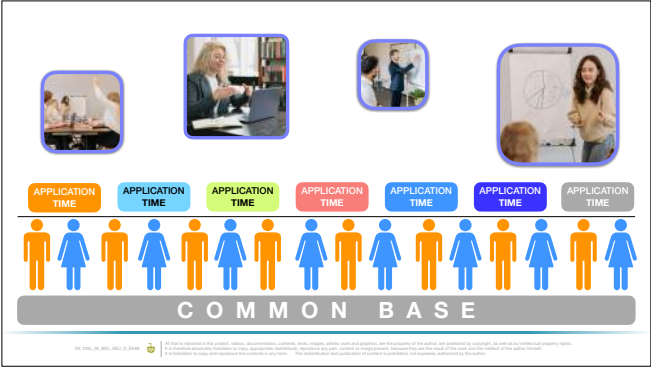


A common basis for participants ...

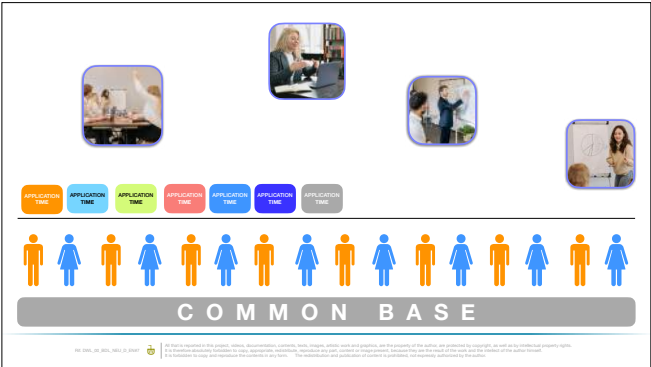


...which determines a level of knowledge of the competence, similar between all of them.

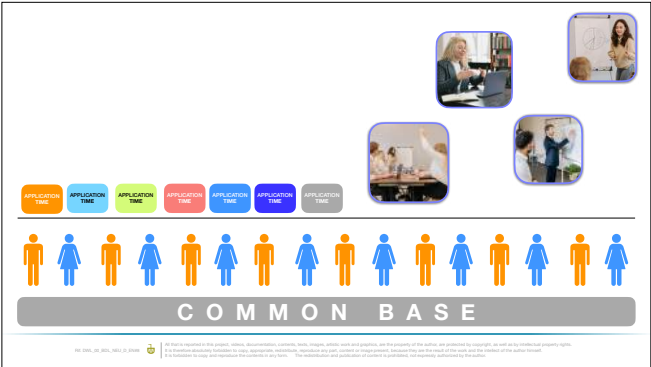
It becomes easier, more focused and more convenient to imagine live interventions...



... with homogeneous participants ...



...during the digital journey, or after it.



Enrich the training with what you consider most appropriate: such as classroom, events, testimonials.



You know what is needed, we think about the basis of your training and growth projects.





**Copyright
and
intellectual
property**

All that is reported in this project, videos, documentation, contents, texts, images, artistic work and graphics, are the property of the author, are protected by copyright, as well as by intellectual property rights. It is therefore absolutely forbidden to copy, appropriate, redistribute, reproduce any part, content or image present, because they are the result of the work and the intellect of the author himself. It is forbidden to copy and reproduce the contents in any form. The redistribution and publication of content is prohibited, not expressly authorized by the author.
